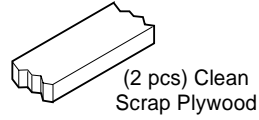
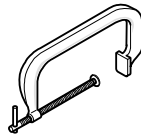
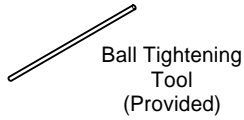
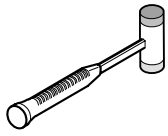


TIGHT JOINT CONNECTOR

Installation Instructions

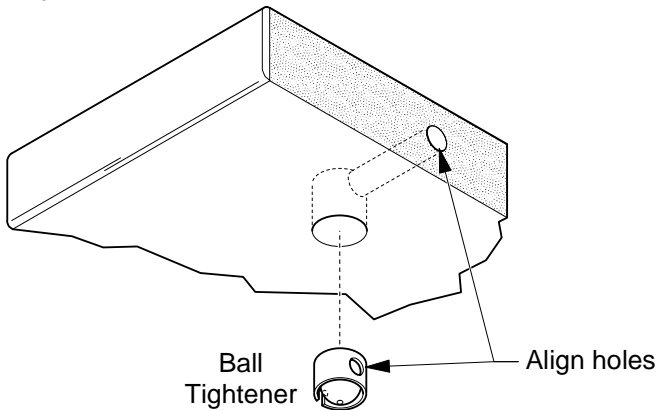
Tools Required



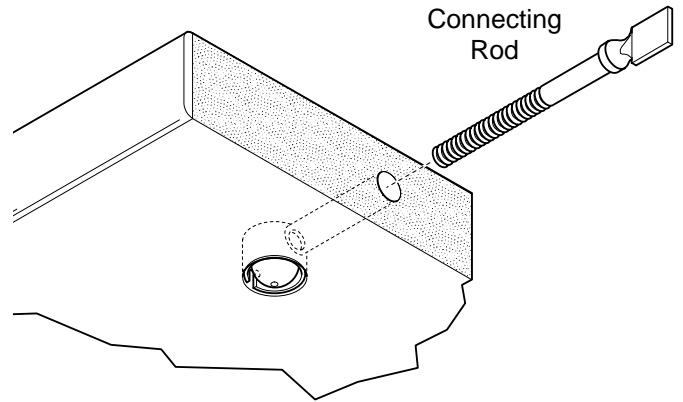
1 Install ball tightener

NOTE!

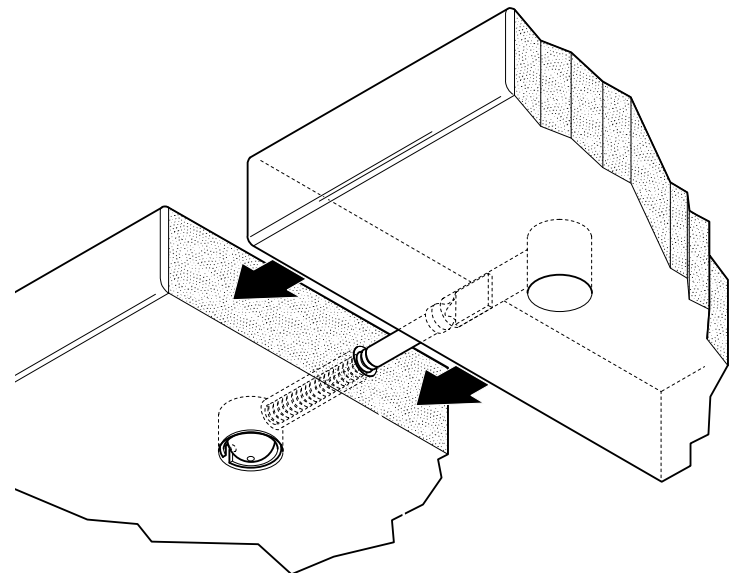
Align hole on ball tightener with hole on mating edge of worktop.



2 Install connecting rod



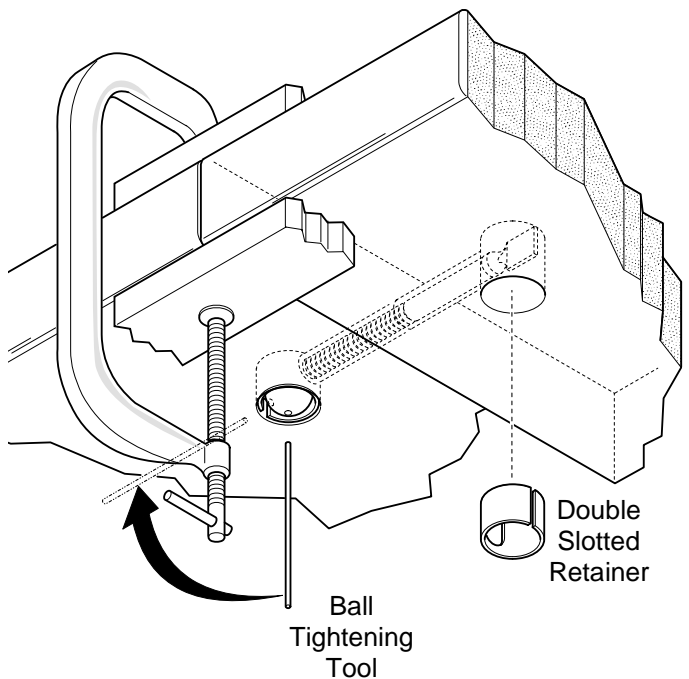
3 Slide opposite worktop over connecting rod



4 Install double slotted retainer and tighten

NOTE!

Before tightening joint connector use plywood and C-clamp to keep worksurfaces flush. Shoulder of connecting rod should be inside the double slotted retaining ring.



CUSTOMER SERVICE PHONE: 1-800-426-8562

HAWORTH

E.C.O. No: 305-009

Page: 1 OF 1

Part No: 7021-6905

Rev: B